



RAIL4CITIES

RAILway stations for green and socially inclusive CITIES

Project budget: approx. 700 000 €

Duration: 24 months

Project start date: 01/07/2023

Project end date: 30/06/2025

Partners: 14 partners from 7 countries

Project coordinator: Factual Consulting SL

Work programme: HORIZON-ER-JU-2022-02

Grant agreement: No 101121703

Railway stations hold a unique position in the urban landscape: they not only act as complex nodes of mobility and transport, but also as public places that can be seen as integral elements of the city. Consequently, stations have a decisive impact on their urban surroundings as places of everyday life, affecting all stakeholders including citizens and the environment.



The project is supported by the Europe's Rail and its members.



Funded by
the European Union

Funded by the European Union. Views and opinions expressed are however those of the author(s) only and do not necessarily reflect those of the European Union or of the Europe's Rail JU. Neither the European Union nor the Europe's Rail JU can be held responsible for them.

Rail Services

Nature Based Solutions

15-minute city

Energy hub, Transit Oriented Development

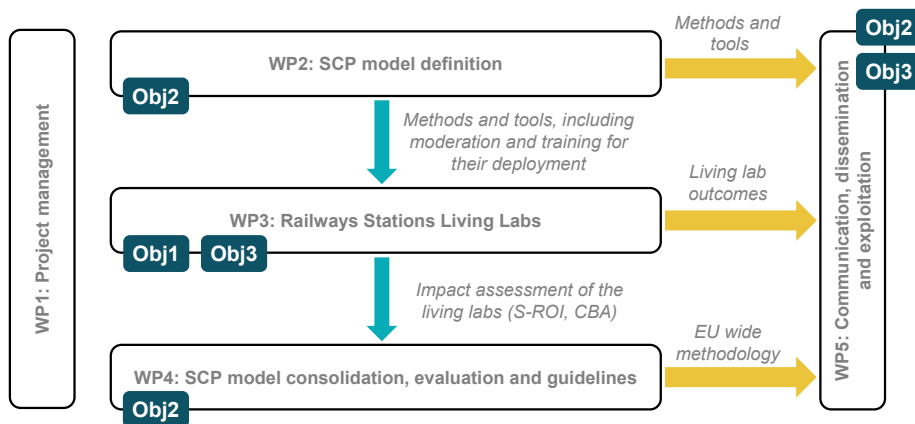
Green and active mobility

Intermodal station

PROJECT OBJECTIVES

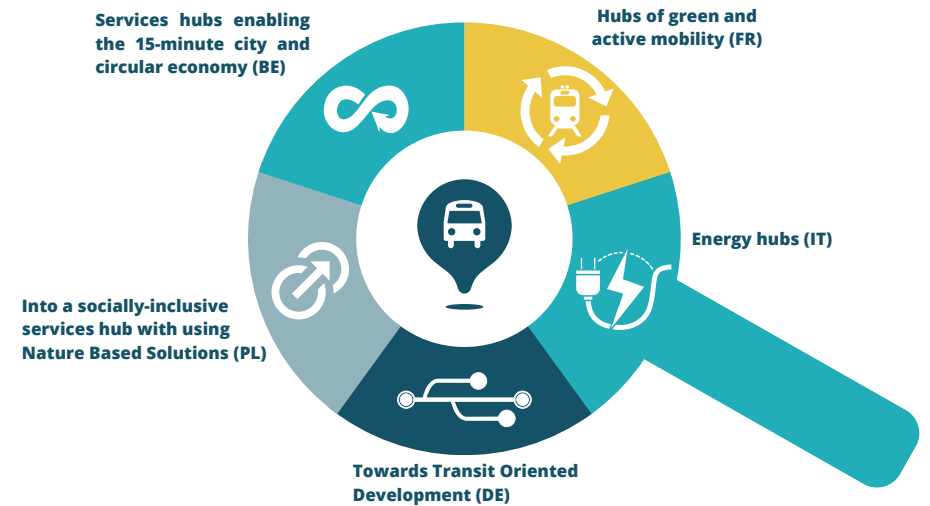
The central ambition of RAIL4CITIES is to develop a new operational, readily available and highly applicable model of stations (SCP model), combined with a common European methodology and tool for its effective implementation. The project takes inter-dependent impediments (profit-orientated business model, complex web of agents and stakeholders, policy gaps) into account and provides decision makers with the tools to transform stations into promoters of sustainable cities.

PROJECT STRUCTURE



IMPLEMENTATION APPROACH

The model will be applied to 5 living labs addressing the stations' transformation:



This will be enhanced by 3 case-studies from the high-speed rail line from Lisbon to Oporto (PT) to study the resilience of infrastructures for both adaptation of spaces to new future uses, and adaptation to climate-change issues and health crises.

CONSORTIUM

With 14 partners from 7 European countries, further supported by 9 institutions through letters of support, the RAIL4CITIES consortium and ecosystem integrates the relevant stakeholders from universities, industry, government and the public. He is therefore in the position to design, evaluate and publish a EU-wide model for transforming existing stations or designing new ones into socio-technical systems operating as city's greening engines for the surrounding environment, and new urban hubs aggregating multiple services for the users and its citizens.

Spain
FACTUAL
CIMNE-CERCA

France
UIC
SNCF H&C

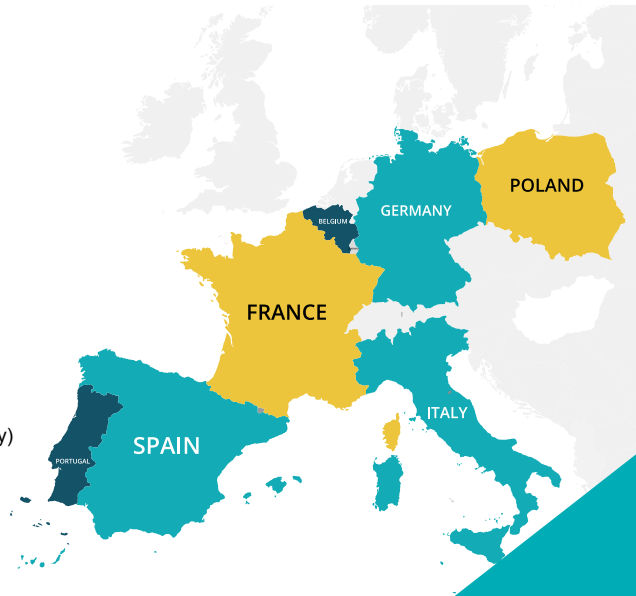
Germany
TUM
BABLE
STMB (Associated partner)
DB S&S (Associated partner)

Poland
PKP
IBDIM (PKP affiliated entity)

Italy
RFI
METROPARK (RFI affiliated entity)

Belgium
NMBS/SNCF

Portugal
IP (Associated partner)



FACTUAL

CIMNE³
CENTRO TECNOLÓGICO DE INVESTIGACIÓN Y DESARROLLO

B

Road and Bridge
Research Institute

SNCF
HUBS
& CONNECTIONS

PKP

RFI
INFRASTRUCTURE ITALIANA
GRUPPO FERROVIE DELLO STATO

SNCF
GARE
& SERVICES

UIC

METROPARK
INFRASTRUCTURE PORTUGAL

TUM

BABLE

Infraestruturas
de Portugal

República Portuguesa
Instituto Nacional de Transportes e Infraestruturas

Smart City | DB

www.rail4cities.eu



@RAIL4CITIES



RAIL4CITIES



Funded by
the European Union

Europe's Rail

The project is supported by the Europe's Rail and its members.

Funded by the European Union. Views and opinions expressed are however those of the author(s) only and do not necessarily reflect those of the European Union or of the Europe's Rail JU. Neither the European Union nor the Europe's Rail JU can be held responsible for them.

* Associated partners